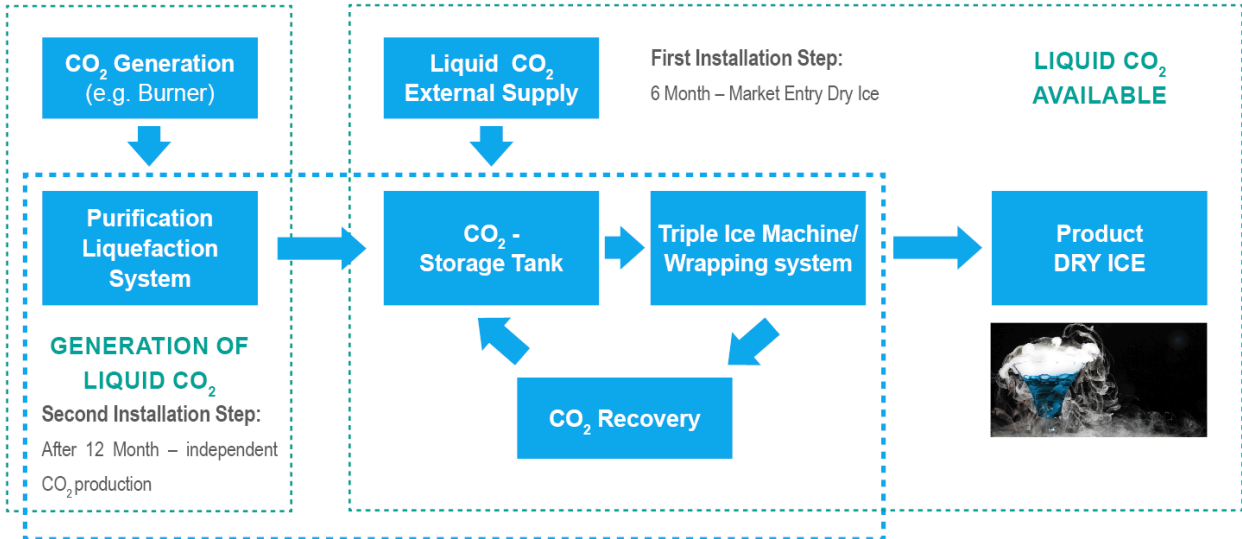


# CO<sub>2</sub> TECHNOLOGY

## DRY ICE PRODUCTION GENERAL OVERVIEW



COMPLETE PACKAGE CAN BE DELIVERED BY CRYOTEC ANLAGENBAU GMBH

### Dry Ice Production as Carbon Dioxide Application

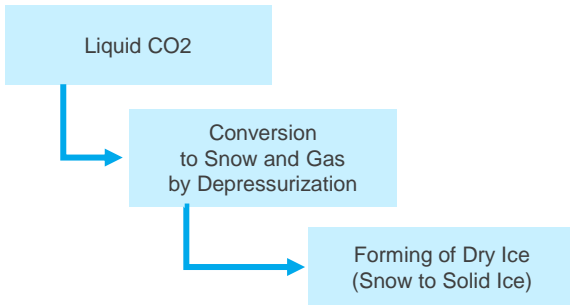
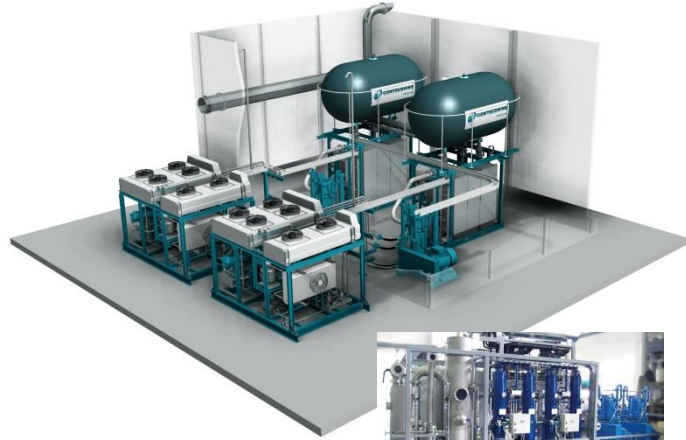
- ✓ CO<sub>2</sub> as dry-ice pellets used in dry ice blasting – a technology for non-abrasive cleaning purposes, used in electronic, printing, shipbuilding industry to clean various kinds of equipment
- ✓ Dry ice production for food applications
- ✓ Catering configuration for: airports, railway companies, large events



## OUR PORTFOLIO FOR THE CHEMICAL, POWER AND FOOD INDUSTRY

### Short Process Description

Dry ice is produced from liquid carbon dioxide (CO<sub>2</sub>). Inside a dry ice pelletizer, the liquid carbon dioxide is expanded under controlled conditions to form dry ice snow. This snow is then pressed through an extruder plate into round pellets for dry ice blasting purposes or into pellets / dry ice slices / blocks for cooling purpose. The unavoidable CO<sub>2</sub> exhaust gas can be returned to the process by means of re-condensation.



### Characteristics of Our Plants

- ✓ Compact installation
- ✓ Quality and functional check in CRYOTEC workshops
- ✓ Very short erection / commissioning time due to prefabricated units
- ✓ Application of well-proven equipment
- ✓ Efficient plant operation
- ✓ High product quality
- ✓ Competitive solution due to standardization



**YOU WOULD LIKE TO LEARN MORE ABOUT OUR TECHNOLOGIES?**

Let us know! We are looking forward to helping you



**SPEZIALIST IN TECHNICAL GASES**



**MODULAR SYSTEM**



**PLANT CONSTRUCTION**



**AFTER SALES SERVICES**



**Corinne Ziege**

Head of Project Management

Phone: +49 3425 89 65 – 1677

Email: corinne.ziege@cryotec.de



**Hans-Jörg Schuster**

Sales Engineer

Phone: +49 3425 89 65 – 1673

Email: hans-joerg.schuster@cryotec.de