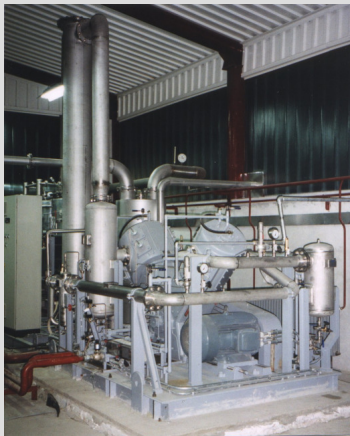


CO₂-Recovery Plant, Model COPRA 1000

Plant model COPRA 1000 is a standard plant for purification and liquefaction of 1000 kg/h CO₂ and especially designed for recovery of CO₂ from highly contaminated CO₂-raw gas, coming from fermentation processes, e.g. alcohol distillation.



CO₂-Product Data

Liquefaction capacity	1000 kg/h CO ₂
Liquefaction pressure	appr. 18 bar g
Pressure in storage tank	14 – 16 bar g
CO ₂ -purity	> 99,9 % by vol. food/beverage/pharma- quality

Characteristics

- ✓ Compact installation
- ✓ Quality and functional check in CRYOTEC workshops
- ✓ Very short erection/commissioning time due to ready piped and wired plant skids
- ✓ Application of trusted and well-proven equipment
- ✓ Efficient plant operation
- ✓ High product quality
- ✓ Competitive solution due to standardization



Required space without CO₂-storage tank

Main equipment (without stripper):

L x W x H approx.:

13 x 8.7 x 4.8 m

Stripper, L x W x H, approx.:

1.50 x 6.20 x 7 m

Total weight without CO₂-storage tank, approx.:

25 t

CO₂-Recovery Plant, Model COPRA 1000

Main equipment of the plant

- Foam separator
- 3-stage gas washer
- CO₂-ballon gasholder
- CO₂-compressor, oil free
- CO₂-precooling system
- CO₂-purification battery
- CO₂-drying battery
- CO₂-stripper
- CO₂-condenser with refrigeration unit
- Control cabinet with PLC Simatic S7
- Option: CO₂-storage tank with transfer pump



High plant safety

High reliability due to high plant safety and longterm experience in process design, plant engineering and construction.

High economic efficiency

- ✓ Low energy consumption
- ✓ Low costs for maintenance and plant operation
- ✓ Low labour input



Contact:

CRYOTEC Anlagenbau GmbH
Industriestraße 4 - 6

D-04808 Wurzen/Germany

Tel.: +49 (0) 34 25 / 89 65 0
Fax: +49 (0) 34 25 / 89 65 38
E-Mail: contact@cryotec.de

Our services are your success!